

PROJECT NO.	SHEET NO.	TOTAL NO.
10SP.20905.7	1	6

SUMMARY OF QUANTITIES

PROJECT NO	COUNTY	MAP NO	ROUTE	DESCRIPTION	LANES	LENGTH MI	WIDTH FT	ASPHALT SURFACE TREATMENT, DOUBLE SEAL SY	ASPHALT SURFACE TREATMENT, TRIPLE SEAL SY	EMULSION FOR ASPHALT SURFACE TREATMENT GAL	BLOTTING SAND TON	WORK ZONE ADVANCE/GENERAL WARNING SIGNING SF	TEMPORARY TRAFFIC CONTROL LS
10SP.20905.7	Union	1	SR 1649 (SUGARWINE RD)	FROM SR 1627 (NEW SALEM RD) TO SR 1658 (NEW HOPE CH. RD)	2	1.99	18	21,014		10,507		148	
TOTAL FOR MAP NO. 1						1.99		21,014		10,507		148	
10SP.20905.7	Union	2	SR 1649 (SUGARWINE RD)	FROM SR 1658 (NEW HOPE CH RD) TO NC 218	2	1.4	18	14,784		7,392		64	
TOTAL FOR MAP NO. 2						1.4		14,784		7,392		64	
10SP.20905.7	Union	3	SR 1649 (SUGARWINE RD)	FROM NC 218 TO SR 1661 (MORGAN ACADAMY RD)	2	1.49	18	15,734		7,867		122	
TOTAL FOR MAP NO. 3						1.49		15,734		7,867		122	
10SP.20905.7	Union	4	SR 1649 (SUGARWINE RD)	FROM SR 1662 (ARMY RD) TO SR 1661 (MORGAN ACADAMY RD)	2	1.4	20	16,427		8,213		90	
TOTAL FOR MAP NO. 4						1.4		16,427		8,213		90	
10SP.20905.7	Union	5	SR 1662 (ARMY RD)	FROM NC 218 TO SR 1649 (SUGARWINE RD)	2	2.4	20	28,160		14,080		180	
TOTAL FOR MAP NO. 5						2.4		28,160		14,080		180	
10SP.20905.7	Union	6	SR 1706 (FISH RD)	FROM SR 1701 (ST. TIMOTHY RD) TO THE ANSON COUNTY LINE	2	3.57	20	41,888		20,944		276	
TOTAL FOR MAP NO. 6						3.57		41,888		20,944		276	
10SP.20905.7	Union	7	SR 1713 (JERUSALEM CH RD)	FROM NC 218 TO THE END OF PAVEMENT	2	1.75	16	16,427		8,213		174	
TOTAL FOR MAP NO. 7						1.75		16,427		8,213		174	
10SP.20905.7	Union	8	SR 1649 (TARLTON MILL RD)	FROM SR 1627 (NEW SALEM RD) TO SR 1006 (OLIVE BRANCH RD)	2	3.06	18	32,314		16,157		244	
TOTAL FOR MAP NO. 8						3.06		32,314		16,157		244	
10SP.20905.7	Union	9	SR 1650 (JOHN HARGETT)	FROM SR 1649 (TARLTON MILL RD) TO SR 1627 (NEW SALEM RD)	2	0.61	20	7,157		3,579		110	
TOTAL FOR MAP NO. 9						0.61		7,157		3,579		110	
10SP.20905.7	Union	10	SR 1672 (MULLIS NEWSOME RD)	FROM SR 1627 (NEW SALEM RD) TO THE DEAD END	2	0.66	20	7,744		3,872		110	
TOTAL FOR MAP NO. 10						0.66		7,744		3,872		110	
10SP.20905.7	Union	11	SR 1643 (WATSON CH RD)	FROM SR 1627 (NEW SALEM RD) TO NC 200	2	2.21	20	25,931		12,965		244	
TOTAL FOR MAP NO. 11						2.21		25,931		12,965		244	
10SP.20905.7	Union	12	SR 1642 (CARL POLK RD)	FROM SR 1649 (SUGARWINE RD) TO SR 1631 (LAWYERS RD)	2	2.75	20	32,267		16,133		244	
TOTAL FOR MAP NO. 12						2.75		32,267		16,133		244	
10SP.20905.7	Union	13	SR 1641 (JUSTIN BRASWELL RD)	FROM SR 1642 (CARL POLK RD) TO NC 200	2	0.58	20	6,805		3,403		110	
TOTAL FOR MAP NO. 13						0.58		6,805		3,403		110	
10SP.20905.7	Union	14	SR 1628 (PRICE RUSHING RD)	FROM SR 1627 (NEW SALEM RD) TO THE DEAD END	2	0.73	20	8,565		4,283		110	
TOTAL FOR MAP NO. 14						0.73		8,565		4,283		110	
10SP.20905.7	Union	15	SR 1635 (SINCERITY RD)	FROM SR 1627 (NEW SALEM RD) TO NC 200	2	1.82	19	20,287		10,143		174	
TOTAL FOR MAP NO. 15						1.82		20,287		10,143		174	
10SP.20905.7	Union	16	SR 1711 (OLD KENNEDY/FORD RD)	FROM NC 205 TO SR 1710 (PLEASANT HILL CH RD)	2	1.77	19	19,730		9,865		174	
TOTAL FOR MAP NO. 16						1.77		19,730		9,865		174	
10SP.20905.7	Union	17	SR 1658 (NEW HOPE CH RD)	FROM NC 205 TO SR 1657 (HAIGLER GIN RD)	2	2.73	18	28,829		14,414		244	
TOTAL FOR MAP NO. 17						2.73		28,829		14,414		244	

PROJECT NO.	SHEET NO.	TOTAL NO.
10SP.20905.7	2	6

SUMMARY OF QUANTITIES

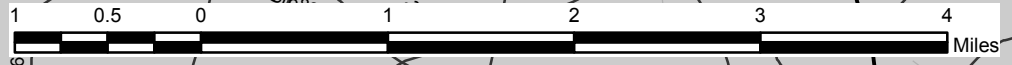
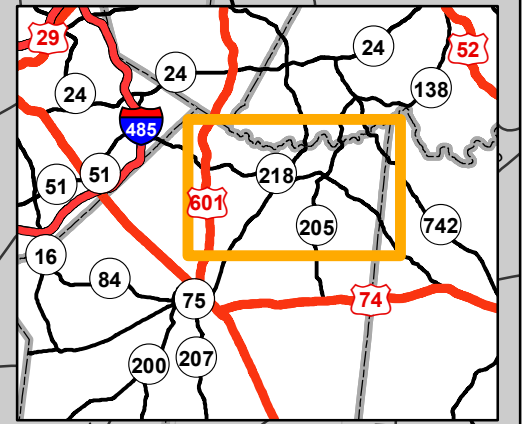
PROJECT NO	COUNTY	MAP NO	ROUTE	DESCRIPTION	LANES	LENGTH MI	WIDTH FT	ASPHALT SURFACE TREATMENT, DOUBLE SEAL SY	ASPHALT SURFACE TREATMENT, TRIPLE SEAL SY	EMULSION FOR ASPHALT SURFACE TREATMENT GAL	BLOTTING SAND TON	WORK ZONE ADVANCE/GENERAL WARNING SIGNING SF	TEMPORARY TRAFFIC CONTROL LS
10SP.20905.7	Union	18	SR 1718 (DUSTY LANE)	FROM NC 218 TO END OF MAINTENANCE	2	0.87	20	10,208		5,104		110	
TOTAL FOR MAP NO. 18						0.87		10,208		5,104		110	
10SP.20905.7	Union	19	SR 1607 (OLD FERRY RD)	FROM THE END OF MAINTENANCE TO SR 1547 (SIKES MILL RD)	2	1.28	20	15,019		7,509		110	
TOTAL FOR MAP NO. 19						1.28		15,019		7,509		110	
10SP.20905.7	Union	20	SR 1607 (OLD FERRY RD)	FROM SR 1606 (SIKES MILL RD) TO NC 218	2	1.85	18	19,536		9,768		270	
TOTAL FOR MAP NO. 20						1.85		19,536		9,768		270	
10SP.20905.7	Union	21	SR 1639 (ALEXANDER FARM RD)	FROM SR 1001 (LOVE MILL RD) TO END OF MAINTENANCE	2	1.42	20	16,661		8,331		110	
TOTAL FOR MAP NO. 21						1.42		16,661		8,331		110	
10SP.20905.7	Union	22	SR 1663 (GREEN RD)	FROM SR 1001 (LOVE MILL RD) TO END OF MAINTENANCE	2	0.35	19	3,901		1,951		110	
TOTAL FOR MAP NO. 22						0.35		3,901		1,951		110	
10SP.20905.7	Union	23	SR 1664 (SANTA CLAUS RD)	FROM SR 1001 (LOVE MILL RD) TO END OF MAINTENANCE	2	1.1	20	12,907		6,453		110	
TOTAL FOR MAP NO. 23						1.1		12,907		6,453		110	
10SP.20905.7	Union	24	SR 1656 (HAIGLER RD)	FROM SR 1001 (LOVE MILL RD) TO NC 200 (MORGAN MILL RD)	2	1.26	19	14,045		7,022		110	
TOTAL FOR MAP NO. 24						1.26		14,045		7,022		110	
10SP.20905.7	Union	25	SR 1655 (CARRIKER RD)	FROM SR 1001 (LOVE MILL RD) TO AGR NANCE RD	2	1.22	19	13,599		6,799		142	
TOTAL FOR MAP NO. 25						1.22		13,599		6,799		142	
10SP.20905.7	Union	26	SR 1675 (BRASWELL RUSHING RD)	FROM SR 1606 (SIKES MILL RD) TO SR 1001 (LOVE MILL RD)	2	0.91	18	9,610		4,805		110	
TOTAL FOR MAP NO. 26						0.91		9,610		4,805		110	
10SP.20905.7	Union	27	SR 1671 (KATE RD)	FROM SR 1611 (CLONTZ/LONG RD) TO SR 1612 (LAWYERS RD)	2	0.84	19	9,363		4,682		110	
TOTAL FOR MAP NO. 27						0.84		9,363		4,682		110	
10SP.20905.7	Union	28	SR 1667 (TESH RD)	FROM SR 1601 (UNIONVILLE RD) TO END OF MAINTENANCE	2	0.86	17	8,577		4,289		110	
TOTAL FOR MAP NO. 28						0.86		8,577		4,289		110	
10SP.20905.7	Union	29	SR 1610 (OLD FISH RD)	FROM SR 1601 (UNIONVILLE/BRIEF RD) TO SR 1606 (SIKES MILL RD)	2	1.53	20	17,952		8,976		110	
TOTAL FOR MAP NO. 29						1.53		17,952		8,976		110	
10SP.20905.7	Union	30	SR 1600 (HOPEWELL CH RD)	FROM THE CABARRUS COUNTY LINE TO THE PAVEMENT JOINT	2	1.2	20	14,080		7,040		87	
TOTAL FOR MAP NO. 30						1.2		14,080		7,040		87	
10SP.20905.7	Union	31	SR 1600 (HOPEWELL CH RD)	FROM THE PAVEMENT JOINT TO THE PAVEMENT JOINT @ US 601	2	1.5	18	15,840		7,920		119	
TOTAL FOR MAP NO. 31						1.5		15,840		7,920		119	
10SP.20905.7	Union	32	SR 1601 (UNIONVILLE/BRIEF RD)	FROM SR 1547 (BRIEF RD) TO NC 218	2	2.34	18	24,710		12,355		174	
TOTAL FOR MAP NO. 32						2.34		24,710		12,355		174	
10SP.20905.7	Union	33	SR 1603 (PRICE-TUCKER RD)	FROM NC 218 TO THE END OF MAINTENANCE	2	0.84	19	9,363		4,682		110	
TOTAL FOR MAP NO. 33						0.84		9,363		4,682		110	
10SP.20905.7	Union	34	SR 1542 (E OLD DUTCH RD)	FROM SR 1600 (HOPEWELL CH RD) TO US 601	2	0.8	18	8,448		4,224		110	
TOTAL FOR MAP NO. 34						0.8		8,448		4,224		110	

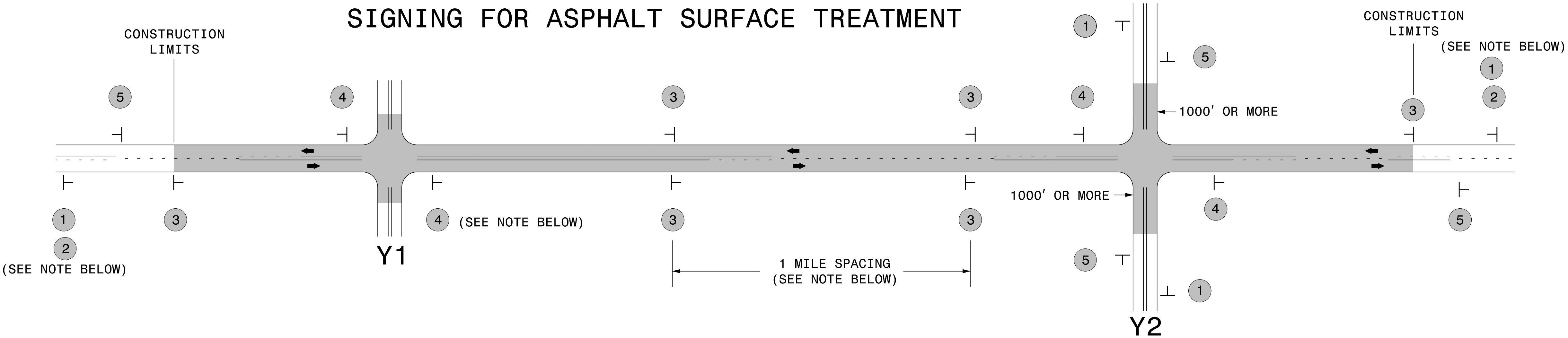
PROJECT NO.	SHEET NO.	TOTAL NO.
10SP.20905.7	3	6

SUMMARY OF QUANTITIES

PROJECT NO	COUNTY	MAP NO	ROUTE	DESCRIPTION	LANES	LENGTH MI	WIDTH FT	ASPHALT SURFACE TREATMENT, DOUBLE SEAL SY	ASPHALT SURFACE TREATMENT, TRIPLE SEAL SY	EMULSION FOR ASPHALT SURFACE TREATMENT GAL	BLOTTING SAND TON	WORK ZONE ADVANCE/GENERAL WARNING SIGNING SF	TEMPORARY TRAFFIC CONTROL LS
10SP.20905.7	Union	35	SR 1611 (CLONTZ/LONG RD)	FROM US 601 TO SR 1606 (SIKES MILL RD)	2	3.34	19		37,230	27,922		340	
TOTAL FOR MAP NO. 35						3.34			37,230	27,922		340	
10SP.20905.7	Union	36	SR 1612 (LAWYERS RD)	FROM SR 1601 (UNIONVILLE/BRIEF RD) TO THE PAVEMENT JOINT @ US 601	2	1.18	19		13,153	9,865		142	
TOTAL FOR MAP NO. 36						1.18			13,153	9,865		142	
TOTAL FOR PROJ NO. 10SP.20905.7						55.61		567,882	50,383	321,727	20.00	5,412	1
GRAND TOTAL						55.61		567,882	50,383	321,727	20.00	5,412	1

Union County AST





LEGEND	
T	STATIONARY SIGN
→	DIRECTION OF TRAFFIC FLOW

MAINLINE (-L-) SIGNING

-Y- LINE SIGNING

SIGNING NOTES AND PLACEMENT PER DIRECTION

①		<p>PLACE 1000' PRIOR TO BEGINNING OF CONSTRUCTION LIMITS. ONLY USED ON -Y- LINES IF RESURFACING LIMITS EXTEND 1000' ALONG -Y- LINE.</p>
②		<p>#2 SIGN ONLY USED WHEN RESURFACING LIMITS ARE 2 OR MORE MILES IN LENGTH. ROUND UP TO NEXT WHOLE NUMBER. (NO FRACTIONAL OR DECIMAL NUMBERS)</p>
③	 	<p>ALTERNATE THE FOLLOWING TWO SIGNS: STARTING WITH "LOOSE GRAVEL" (W8-7) FOLLOWED BY "UNMARKED PAVEMENT".</p> <p>PLACE INITIALLY AT THE CONSTRUCTION LIMITS AND SPACED 1 MILE APART THEREAFTER. IF NO -Y- LINES EXIST, PLACE 2ND SET 1/2 MILE FROM THE CONSTRUCTION LIMITS AND THEN SPACE 1 MILE THEREAFTER.</p>
④		<p>THESE ARE FOR -Y- LINES THAT ARE "THROUGH" ROADWAYS. DEAD END AND SUBDIVISION ROADS ARE NOT "THROUGH" ROADWAYS. INSTALL 500' +/- FROM EACH -Y- LINE APPROACH AS SHOWN ABOVE. FOR MULTIPLE -Y- LINES THAT ARE SEPARATED BY 0.25 MILES OR LESS, TREAT AS A SINGLE UNIT AND INSTALL WITHIN 500' OF EACH APPROACH. A MAXIMUM OF 2 SIGN SETS PER MILE. DO NOT INSTALL WHEN -Y- LINES ARE WITHIN 0.5 MILES FROM "END ROAD WORK" SIGN.</p>
⑤		<p>PLACE 500' FOLLOWING THE END OF CONSTRUCTION LIMITS.</p>

NO REQUIRED STATIONARY SIGNING FOR THE FOLLOWING -Y- LINE CONDITIONS:

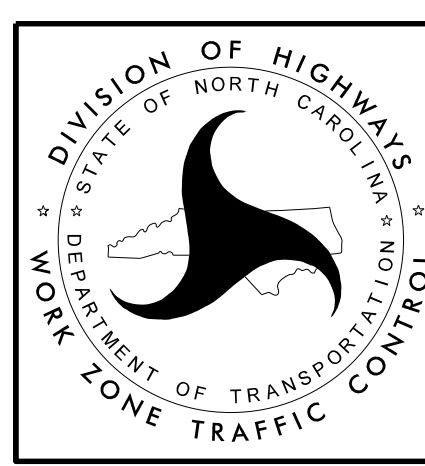
- 1) LESS THAN 1000' OF RESURFACING ALONG -Y- LINE
- 2) SUBDIVISION ROADS
- 3) DEAD END ROADS

WHEN PAVING/CONSTRUCTION ACTIVITIES PROCEED ACROSS AN UNSIGNED -Y- LINE, ADVANCE WARNING PORTABLE SIGNS SHALL BE USED ALONG THE -Y- LINE AS SHOWN BELOW. REMOVE UPON COMPLETION OF WORK.

W20-1
48" X 48"

W20-7 A
48" X 48"

PLACED 500' IN ADVANCE OF FLAGGER. PLACED 250' IN ADVANCE OF FLAGGER.

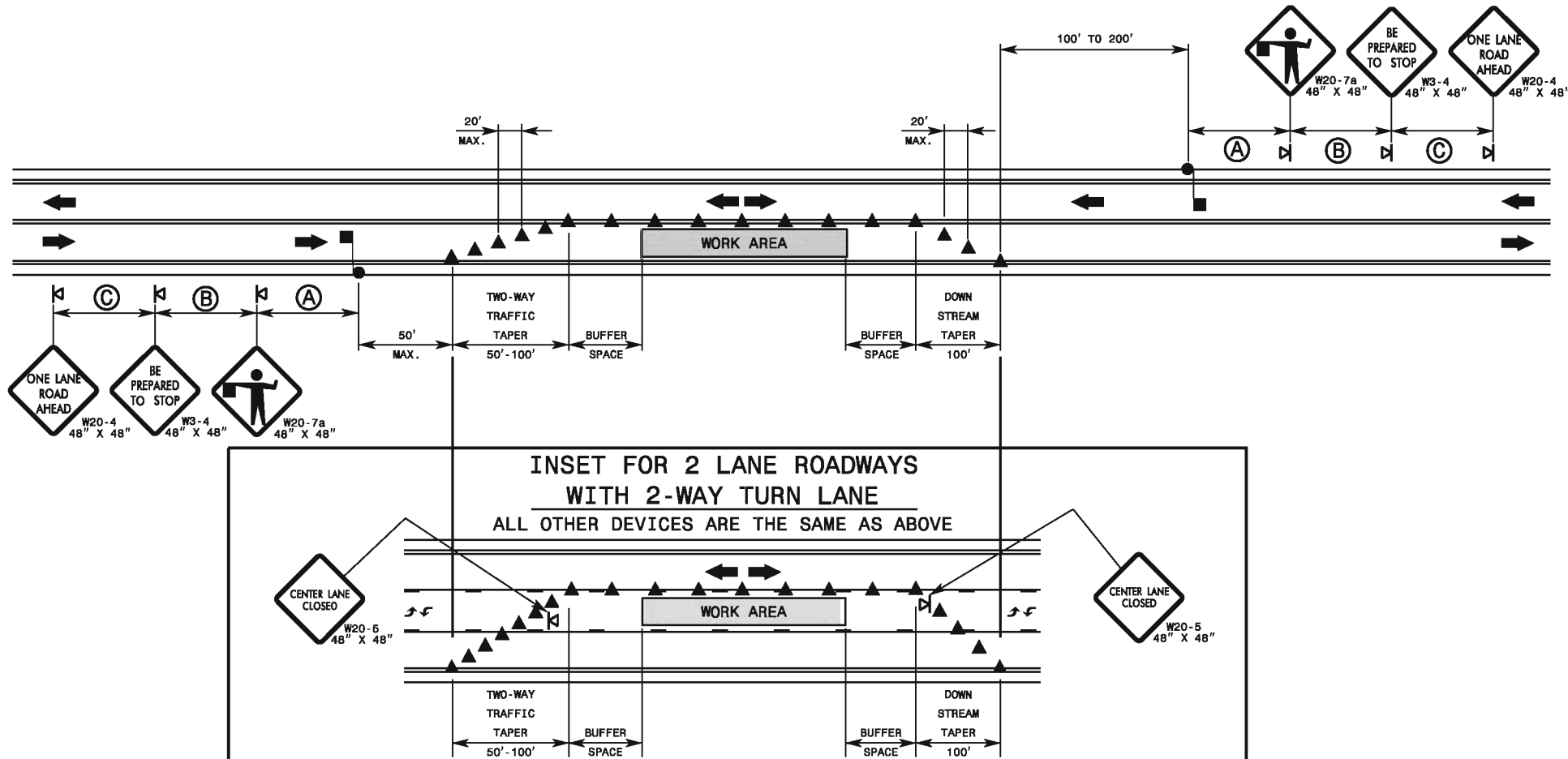


ADVANCE WARNING SIGNS FOR ASPHALT SURFACE TREATMENTS 2 LANE ROADWAYS

12/22/2014 8:21 AM S:\TMU\ZTC\apps\WorkZoneGeneral\ExternalWebPage\DesRes\Resurfacing\Resurfacing_AdvWarn_2Ln - AST.dgn User:rmgarrett

1-12

ENGLISH STANDARD DRAWING FOR
TEMPORARY LANE CLOSURES
2-LANE, 2-WAY ROADWAY-1 LANE CLOSED



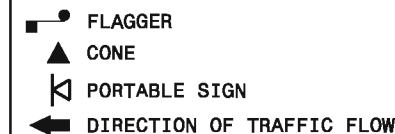
GENERAL NOTES FOR FLAGGER OPERATIONS

- 1- REFER TO STD. 1101.11 SHEET 4 FOR SIGN SPACING.
- 2- INSTALL LANE CLOSURES WITH THE TRAFFIC FLOW, BEGINNING WITH DEVICES ON THE UPSTREAM SIDE OF TRAFFIC.
- 3- REMOVE LANE CLOSURES AGAINST THE TRAFFIC FLOW, BEGINNING WITH DEVICES ON THE DOWNSTREAM SIDE OF TRAFFIC.
- 4- PLACE CONES THRU THE WORK AREA AT THE MAXIMUM SPACING EQUAL IN FEET TO 2 TIMES THE POSTED SPEED LIMIT.
- 5- EXTEND LANE CLOSURES AT THE BUFFER SPACE SUCH THAT STOPPING SIGHT DISTANCE IS PROVIDED TO THE FLAGGER (REFER TO STD. 1101.11 SHEET 2).
- 6- DO NOT STOP TRAFFIC IN ANY ONE DIRECTION FOR MORE THAN 5 MINUTES AT A TIME.
- 7- DRUMS OR SKINNY-DRUMS MAY BE USED IN LIEU OF CONES. REFER TO ROADWAY STANDARD DRAWING 1180.01 FOR SKINNY-DRUM REQUIREMENTS.
- 8- USE FLAGGERS TO CONTROL TRAFFIC AT INTERSECTIONS AFFECTED BY THE LANE CLOSURE. SUPPLEMENT FLAGGERS LOCATED AT INTERSECTIONS WITH FLAGGER AHEAD SIGNS (W20-7a) PLACED APPROXIMATELY 250 FT. IN ADVANCE OF THE FLAGGER. FOR SIGNALIZED INTERSECTIONS PLACE SIGNALS IN THE FLASH MODE AND RECOMMEND THE USE OF LAW ENFORCEMENT.
- 9- REFER TO 2009 MUTCD, CHAPTER 6, FOR FLAGGER CONTROL, REQUIREMENTS, AND PROCEDURES.
- 10- DO NOT EXCEED A 1 MILE LANE CLOSURE LENGTH UNLESS OTHERWISE SHOWN IN THE TMP OR AS DIRECTED BY THE ENGINEER.

GENERAL NOTES FOR PILOT CAR OPERATIONS

- 1- USE PILOT CARS WHEN DIRECTED BY THE ENGINEER.
- 2- IF ROADWAY WIDTH IS LESS THAN 22 FEET (EOP TO EOP), CONES MAY NOT BE REQUIRED ALONG WORK AREA, AND AT THE DISCRETION OF THE ENGINEER, CONES MAY BE OMITTED ALONG THE WORK AREA IF USING A PILOT CAR.
- 3- CONES ARE ALWAYS REQUIRED IN THE UPSTREAM AND DOWNSTREAM TAPERS.
- 4- MOUNT SIGN G20-4 "PILOT CAR FOLLOW ME" AT A CONSPICUOUS POSITION ON THE REAR OF THE PILOT VEHICLE.
- 5- DO NOT INSTALL MORE THAN ONE (1) MILE OF LANE CLOSURE, MEASURED FROM THE BEGINNING OF THE MERGE TAPER TO THE END OF THE LANE CLOSURE.
- 6- ADVISE RESIDENTS AND BUSINESSES WITHIN THE LANE CLOSURE LIMITS ABOUT METHODS OF SAFE EGRESS AND INGRESS FROM DRIVEWAYS DURING FLAGGING AND PILOT CAR OPERATIONS.

LEGEND



1-12

ENGLISH STANDARD DRAWING FOR
TEMPORARY LANE CLOSURES
2-LANE, 2-WAY ROADWAY-1 LANE CLOSED